

SPOT CLINCH® 1106 P50

Multi-purpose portable clinching machine, with Passive Approach Stroke Systems (PASS)



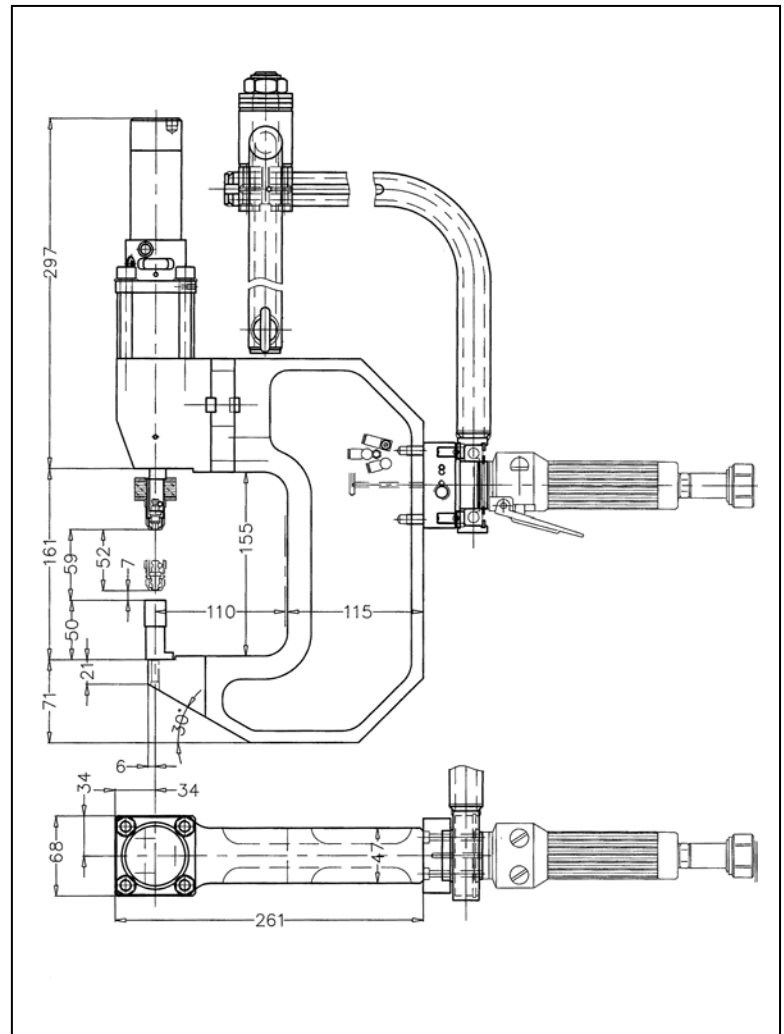
Main features

Multi-purpose, high capacity portable clinching machine. One of its unique features is the Passive Approach Stroke System (PASS) which is included. It consists of a separate trigger for the approach stroke, which is run at low force. Once the punch gap is below 8mm, the second trigger is able to produce the work stroke at high force for the clinching operation. In addition to the safety aspect, the PASS facilitates the positioning of the tool at the clinch joint location prior to trigger the clinching operation. Its design has been optimized for reducing the weight, and for integrating the hydraulic tubing and functions. It is well balanced in all positions by means of a gyroscopic suspension, ball bearing mounted for easy handling. The rotating axis is placed around the handle and the swivel hydraulic connection, in order to facilitate the work head manipulation with one hand and without effort. The booster and 2 m hose are included.

Tecnical specifications

| | | |
|---|--------------|-----------|
| Total weight of the work head, incl. handle and booster | 16 kg | 35 lbs |
| Working air pressure | min. | 4 bar |
| | max. | 6 bar |
| Hydraulic pressure at 6 bar | 350 bar | 5'000 psi |
| Max. tool force at 6 bar | 50 kN | 110 klbs |
| Max. piston force in approach stroke | 50 N | 11 Lbs |
| Work stroke | 6.5 mm | 0.55" |
| Approach stroke | 52 mm | 2.0" |
| Total stroke | 60 mm | 2.36 |
| Cycle time, work stroke | 0.9 to 1.5 s | |
| Max. total sheet thickness, mild steel | 4.0 mm | 0.16" |
| Max. total sheet thickness, stainless steel (tool kit ST) | 3.0 mm | 0.12" |

Main dimensions



Options:

- Mechanical stripper (on piston rod).
Remark: no need for mechanical stripper on die side, due to the principle of the die)
- Gyroscopic suspension, with rotating bearing between handle and C' frame
- Balancer 14-18 Kg

Tool kits:

- Round die Series SRx03, SRx02, Ø 5.0, 6.0, 7.0mm
- Rectangular die Series STxy2, width 4.3, 5.0mm
- Die cage protection and elongators